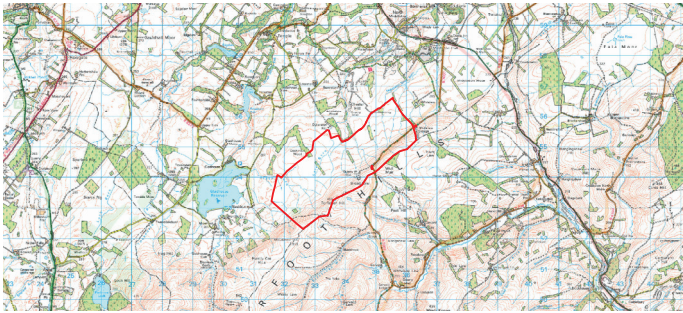


# Torfichen Wind Farm proposal

Newsletter – November 2023

## Section 36 submission

RES has submitted a Section 36 application for consent to the Scottish Government for an 18-turbine wind farm and energy storage proposal located near Torfichen Hill, south of Gorebridge in Midlothian.



© Crown Copyright, All Rights Reserved. 2023 Licence Number 0100031673

The submission follows a wealth of technical and environmental survey work that has helped build our understanding of the site, identify key constraints, and inform the design. An extensive Environmental Impact Assessment Report (EIAR) captures the findings.

We have also undertaken four public consultation events to inform the public and gather feedback on the proposal. This work is summarised in a Pre-Application Consultation (PAC) Report as part of the submission.



Macfie Hall (September 2023 public exhibition)

## Viewing the planning documentation

Electronic copies of the planning application and associated planning documents, including the EIAR, can be viewed at (and downloaded from) [www.torfichen-windfarm.co.uk](http://www.torfichen-windfarm.co.uk) or the Scottish Government Energy Consents Unit (ECU) planning portal at [www.energyconsents.scot](http://www.energyconsents.scot) (reference ECU00004661).

In addition, hard copies of this documentation are available at the following locations for public viewing:

**Middleton Village Community Hall**, 54 Borthwick Castle Terrace, North Middleton EH23 4QU  
(Fri 19:30 – 23:30; Sat 19:30 – 23:00; for other opening hours email [info@middletonvillagehall.com](mailto:info@middletonvillagehall.com))

**Gorebridge Library**, 98 Hunterfield Rd, Gorebridge EH23 4TT  
(Mon & Fri 10:00 – 17:00; Tue & Thu 10:00 – 19:00; Sat 10:00 – 13:00 (Closed Wed & Sun))

## Submitting formal representations

A statutory consultation period is being held by the ECU to enable the public, as well as key consultees, to submit formal representations on the proposal. A copy of the public notice, advertising the Section 36 submission and consultation process, can be found on our project website.

**The closing date for comments is 12 January 2024** although Scottish Ministers may consider representations received after this date.

Comments on the application may be submitted to the ECU in the following ways:

**Online:** [www.energyconsents.scot](http://www.energyconsents.scot)

**Email:** [representations@gov.scot](mailto:representations@gov.scot)

**Post:** Scottish Government, Energy Consents Unit, 4th Floor, 5 Atlantic Quay, 150 Broomielaw, Glasgow, G2 8LU

All feedback needs to identify the project and specify the grounds for representation. Written or emailed representations should be dated, clearly stating the name (in block capitals), full return email or postal addresses of those making comments. Only representations sent by email will receive acknowledgement.

Feedback will be assessed against the proposal and a determination made by Scottish Ministers in due course.

# Creating a future where everyone has access to affordable zero carbon energy.

## Climate change emergency

Climate change is one of the greatest threats facing our planet, and the Scottish and UK Governments have set legally binding targets of reaching net zero by 2045 and 2050 respectively to help tackle climate change.

If consented, Torfichen Wind Farm would be capable of generating enough clean, low-cost electricity for around 117,000 homes<sup>1</sup> each year. The forecast end-to-end carbon payback time for the project, as set out in the EIAR, is 2.5 years.

## Cost of living crisis

Onshore wind, alongside other renewable energy technologies, can generate the lowest-cost form of new electricity generation.

## Security of energy supply

Wind is a free and inexhaustible resource which has an important role to play as part of a balanced energy mix. It increases energy security by reducing our reliance on imports and builds resilience to sudden fossil fuel price fluctuations and the uncertainties of global markets. It is also quicker to build (typically 12-24 months), for example, than offshore wind.

## Inward investment<sup>2</sup>

Torfichen Wind Farm could create a £150 million boost for the local economy as it is predicted to deliver up to £10.2 million of inward investment in Midlothian during development and construction, £55 million of economic activity linked to operations and maintenance, and £64.8 million in business rates over its operational lifetime to Midlothian Council - in addition to a tailored community benefit package for the local area.

## Community benefit package

We are proposing a tailored package of benefits for the community from the wind farm that would be worth over £27 million to the local area over the project's operational lifetime. Throughout the development of the proposal, we have consulted with local people to explore ideas and the feedback received to date demonstrates that RES' unique Local Electricity Discount Scheme (LEDS), which offers an annual discount to the electricity bills of those properties closest to a participating wind farm, is one of the preferred opportunities.

We have begun to engage with representatives from Moorfoot Community Council to discuss the community benefit package to be delivered by Torfichen Wind Farm, if it is consented. Nevertheless, we continue to welcome feedback from the community on suggestions that will help to provide a positive lasting legacy in the local area. Community benefit is not a material planning consideration.

## About us

RES, a British company, has a long history in Scotland where it has been operating since 1993 and has since developed and/or built 21 wind farms, with a total generating capacity of 597MW. Employing more than 150 people in Scotland, it also exports its knowledge and skills in the renewables industry to 14 countries across the globe.

With 40 years of experience and over 2,500 employees worldwide, we're able to put our expertise to good use and power positive change.

For further information visit [www.res-group.com](http://www.res-group.com).



Danny McLean  
Development Project Manager

[danny.mclean@res-group.com](mailto:danny.mclean@res-group.com)

07769 388725

RES, Third Floor STV, Pacific Quay, Glasgow, G51 1PQ

For more information on the proposal please visit [www.torfichen-windfarm.co.uk](http://www.torfichen-windfarm.co.uk) or contact us by using the details above.

If you no longer wish to receive this newsletter or if you require information in Braille, large text or audio, please get in touch with us.

<sup>1</sup> The 117,000 homes equivalent figure has been calculated by taking the predicted annual electricity generation of the site (based on RES assessments Torfichen Wind Farm has a predicted capacity factor of 43.5% - based on a 6MW [megawatt] candidate turbine) and dividing this by the annual average electricity figures from the Department of Business, Energy and Industrial Strategy (BEIS) showing that the annual UK average domestic household consumption is 3,509 kWh (December 2022). Final wind farm capacity will vary depending on the outcome of planning permission and the turbine type selected.

<sup>2</sup> The £10.2 million development and construction spend figure, £55 million economic activity figure, and business rate figure of £68.4 million are all taken from the Socioeconomic Chapter of the Environmental Impact Assessment Report (EIAR).