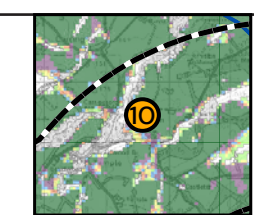


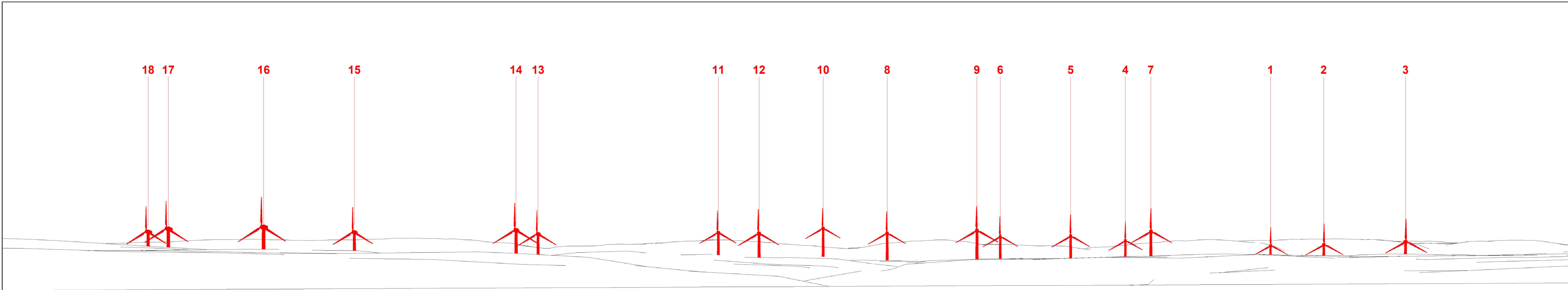
Cumulative Wireline Drawing

KEY: Proposed Torfichen Wind Farm Operational schemes Schemes in planning

Viewpoint Information OS Reference: E 332575 N659446 Distance to nearest turbine: 4167m (T16) Angle of view: 90° (cylindrical)
 Ground level: 162m (AOD) Bearing to centre of photograph: 164.5° Principal distance: 812.5mm

Paper size: 841 x 297 mm (half A1) Correct printed image size: 820 x 260mm
 Camera: Nikon Z 6_2 Lens: 50mm Fixed Focal Lens Height: 1.5m Date & Time: 03/09/2023 16:00

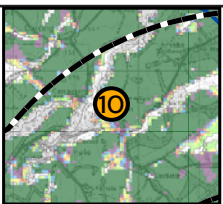




Wireline Drawing

KEY: Proposed Torfichen Wind Farm

Viewpoint Information OS Reference: E 332575 N659446 Distance to nearest turbine: 4167m (T16) Angle of view: 53.5° (planar) Camera: Nikon Z 6_2
 Ground level: 162m (AOD) Bearing to centre of photograph: 164.5° Principal distance: 812.5mm Lens: 50mm Fixed Focal Lens
 Paper size: 841 x 297 mm (half A1) Height: 1.5m
 Correct printed image size: 820 x 260mm Date & Time: 03/09/2023 16:00



(Sheet B)
 LVIA Viewpoint 10 - Arniston House
 Figure 6.46 Drawing number P22-2236_109



Photomontage

Viewpoint Information OS Reference: E 332575 N659446 Distance to nearest turbine: 4167m (T16) Ground level: 162m (AOD) Bearing to centre of photograph: 164.5°

Angle of view: 53.5° (planar) Principal distance: 812.5mm Paper size: 841 x 297 mm (half A1) Correct printed image size: 820 x 260mm

Camera: Nikon Z 6_2 Lens: 50mm Fixed Focal Lens Height: 1.5m Date & Time: 03/09/2023 16:00

