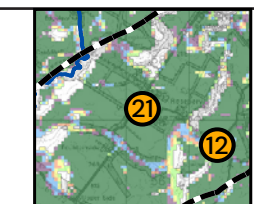


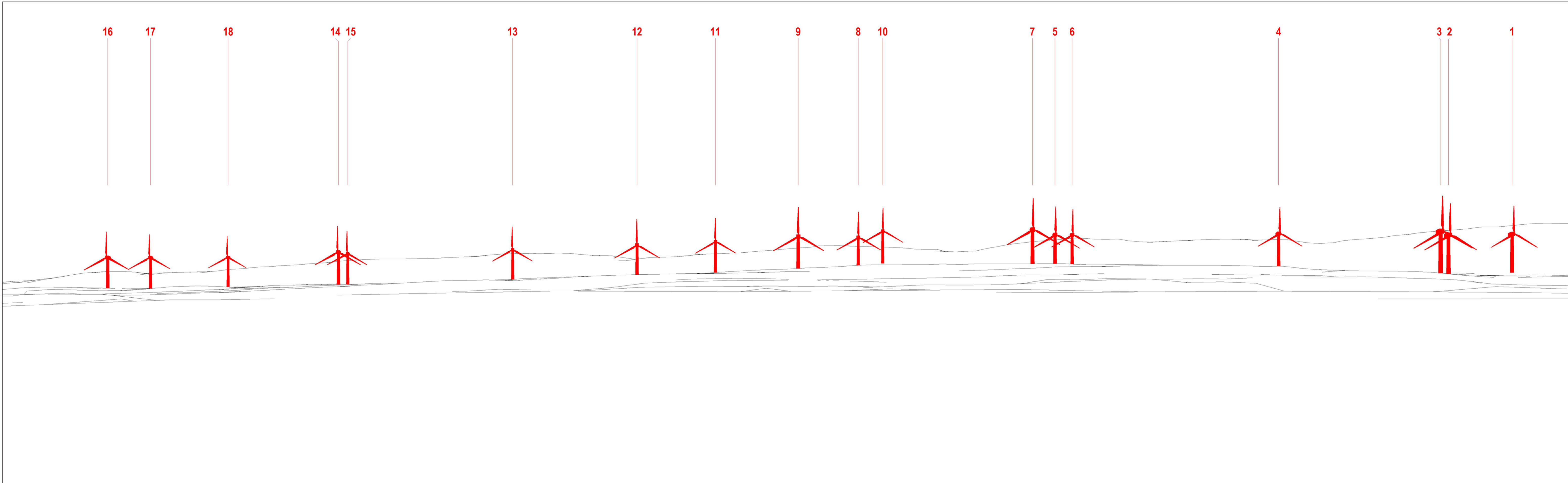
**Viewpoint Information** OS Reference: E329976 N656905 Distance to nearest turbine: 3640m (T3)  
 Ground level: 253m (AOD) Bearing to centre of photograph: 124°

Angle of view: 90° (cylindrical) Camera: Nikon Z 6\_2  
 Principal distance: 812.5mm Lens: 50mm Fixed Focal Lens  
 Paper size: 841 x 297 mm (half A1) Height: 1.5m  
 Correct printed image size: 820 x 260mm Date & Time: 07/08/2023 13:18



(Sheet A)  
 LVIA Viewpoint 21 - B6372, Fountainside  
 Figure 6.57 Drawing number P22-2236\_120



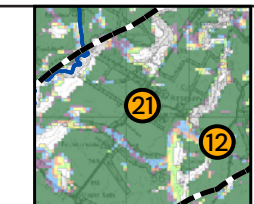


Wireline Drawing

KEY: Proposed Torfichen Wind Farm

**Viewpoint Information** OS Reference: E329976 N656905 Distance to nearest turbine: 3640m (T3)  
 Ground level: 253m (AOD) Bearing to centre of photograph: 124°

Angle of view: 53.5° (planar) Camera: Nikon Z 6\_2  
 Principal distance: 812.5mm Lens: 50mm Fixed Focal Lens  
 Paper size: 841 x 297 mm (half A1) Height: 1.5m  
 Correct printed image size: 820 x 260mm Date & Time: 07/08/2023 13:18



(Sheet B)  
 LVIA Viewpoint 21 - B6372, Fountainside  
 Figure 6.57 Drawing number P22-2236\_120



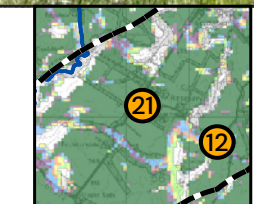


Photomontage

**Viewpoint Information** OS Reference: E329976 N656905 Distance to nearest turbine: 3640m (T3)  
 Ground level: 253m (AOD) Bearing to centre of photograph: 124°

Angle of view: 53.5° (planar)  
 Principal distance: 812.5mm  
 Paper size: 841 x 297 mm (half A1)  
 Correct printed image size: 820 x 260mm

Camera: Nikon Z 6\_2  
 Lens: 50mm Fixed Focal Lens  
 Height: 1.5m  
 Date & Time: 07/08/2023 13:18



TORFICHEN WIND FARM



(Sheet C)  
 LVIA Viewpoint 21 - B6372, Fountainside  
 Figure 6.57 Drawing number P22-2236\_120