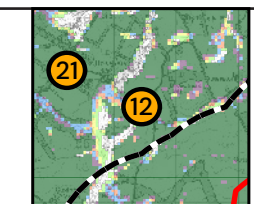


**Viewpoint Information** OS Reference: E331474 N656567 Distance to nearest turbine: 2629m (T7)  
 Ground level: 251m (AOD) Bearing to centre of photograph: 134.7°

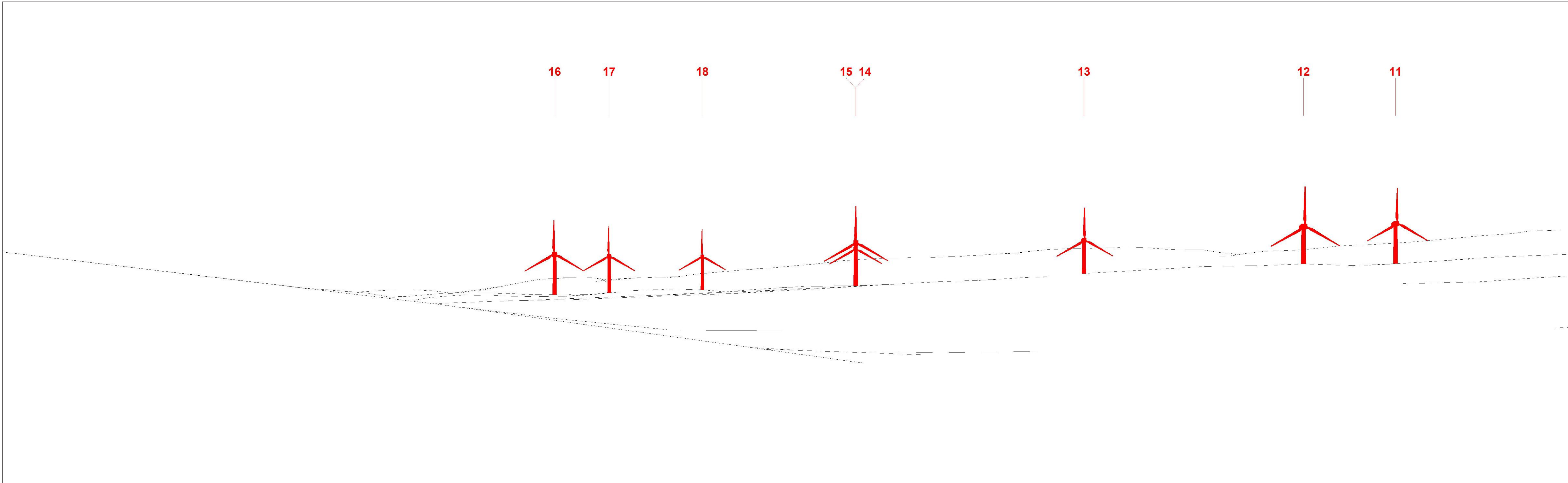
TORFICHEN WIND FARM

Angle of view: 90° (cylindrical)  
 Principal distance: 812.5mm  
 Paper size: 841 x 297 mm (half A1)  
 Correct printed image size: 820 x 260mm

Camera: Canon EOS 5D Mark III  
 Lens: 50mm Fixed Focal Lens  
 Height: 1.5m  
 Date & Time: 06/01/2023 13:24



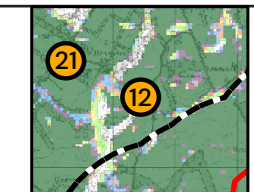
(Sheet A)  
 LVIA Viewpoint 12 - Minor road near Yorkston Farm  
 Figure 6.48 Drawing number P22-2236\_111



Wireline Drawing - Left

KEY: Proposed Torfichen Wind Farm

**Viewpoint Information** OS Reference: E331474 N656567 Distance to nearest turbine: 2629m (T7) Angle of view: 53.5° (planar) Camera: Canon EOS 5D Mark III  
 Ground level: 251m (AOD) Bearing to centre of photograph: 107.95° Principal distance: 812.5mm Lens: 50mm Fixed Focal Lens  
 TORFICHEN WIND FARM Paper size: 841 x 297 mm (half A1) Height: 1.5m Date & Time: 06/01/2023 13:24  
 Correct printed image size: 820 x 260mm



(Sheet B)  
 LVIA Viewpoint 12 - Minor road near Yorkston Farm  
 Figure 6.48 Drawing number P22-2236\_111



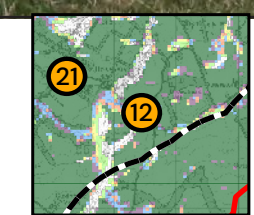
Photomontage

**Viewpoint Information** OS Reference: E331474 N656567  
 Ground level: 251m (AOD)

Distance to nearest turbine: 2629m (T7)  
 Bearing to centre of photograph: 107.95°

Angle of view: 53.5° (planar)  
 Principal distance: 812.5mm  
 Paper size: 841 x 297 mm (half A1)  
 Correct printed image size: 820 x 260mm

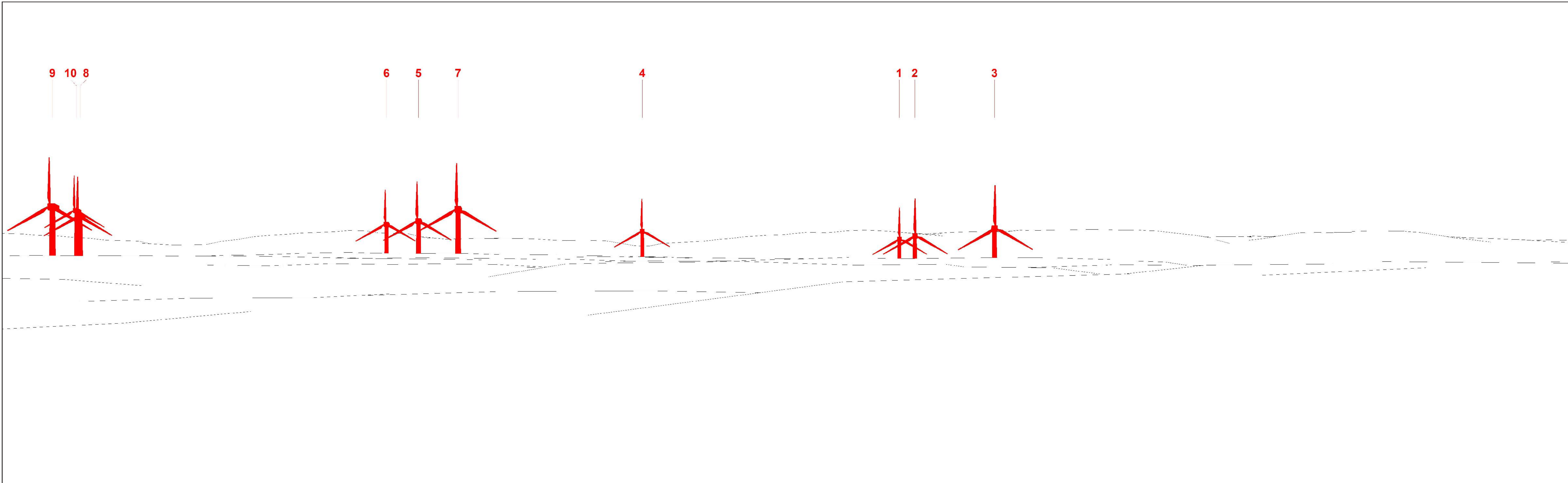
Camera: Canon EOS 5D Mark III  
 Lens: 50mm Fixed Focal Lens  
 Height: 1.5m  
 Date & Time: 06/01/2023 13:24



TORFICHEN WIND FARM



(Sheet C)  
 LVIA Viewpoint 12 - Minor road near Yorkston Farm  
 Figure 6.48 Drawing number P22-2236\_111



Wireline Drawing - Right

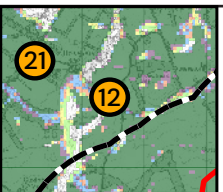
KEY: Proposed Torfichen Wind Farm

**Viewpoint Information** OS Reference: E331474 N656567  
Ground level: 251m (AOD)

Distance to nearest turbine: 2629m (T7)  
Bearing to centre of photograph: 162°

Angle of view: 53.5° (planar)  
Principal distance: 812.5mm  
Paper size: 841 x 297 mm (half A1)  
Correct printed image size: 820 x 260mm

Camera: Canon EOS 5D Mark III  
Lens: 50mm Fixed Focal Lens  
Height: 1.5m  
Date & Time: 06/01/2023 13:24



TORFICHEN WIND FARM



(Sheet D)  
LVIA Viewpoint 12 - Minor road near Yorkston Farm  
Figure 6.48 Drawing number P22-2236\_111



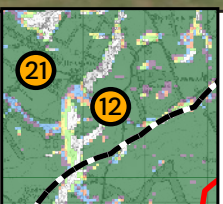
Photomontage - Right

**Viewpoint Information** OS Reference: E331474 N656567  
Ground level: 251m (AOD)

Distance to nearest turbine: 2629m (T7)  
Bearing to centre of photograph: 162°

Angle of view: 53.5° (planar)  
Principal distance: 812.5mm  
Paper size: 841 x 297 mm (half A1)  
Correct printed image size: 820 x 260mm

Camera: Canon EOS 5D Mark III  
Lens: 50mm Fixed Focal Lens  
Height: 1.5m  
Date & Time: 06/01/2023 13:24



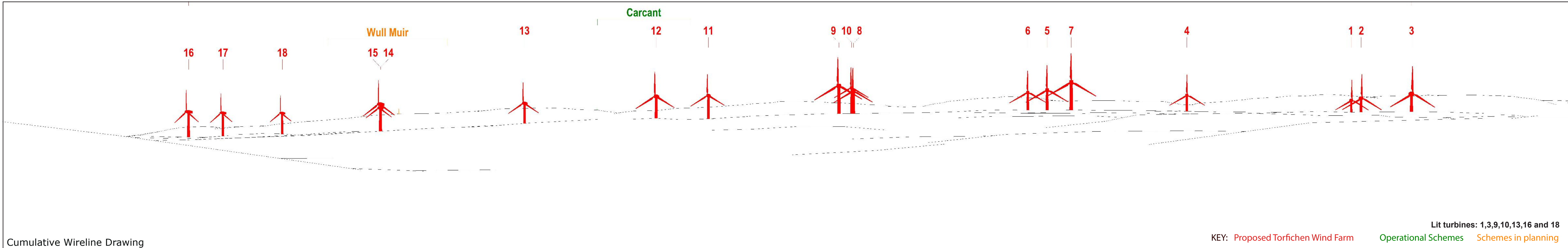
TORFICHEN WIND FARM



(Sheet E)  
LVIA Viewpoint 12 - Minor road near Yorkston Farm  
Figure 6.48 Drawing number P22-2236\_111



Existing View

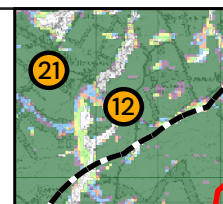


Cumulative Wireline Drawing

**Viewpoint Information** OS Reference: E331472 N656568 Distance to nearest turbine: 2631m (T7)  
 Ground level: 251m (AOD) Bearing to centre of photograph: 133.8°

Angle of view: 90° (cylindrical)  
 Principal distance: 812.5mm  
 Paper size: 841 x 297 mm (half A1)  
 Correct printed image size: 820 x 260mm

Camera: Canon EOS 5D Mark III  
 Lens: 50mm Fixed Focal Lens  
 Height: 1.5m  
 Date & Time: 06/01/2023 13:24



(Sheet F)  
 LVIA Viewpoint 12 - Minor road near Yorkston Farm  
 Figure 6.48 Drawing number P22-2236\_111



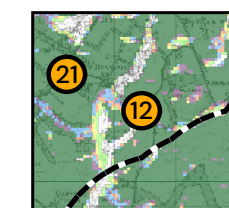
Photomontage presented at 90 degrees to illustrate the full extent of the wind farm.

Photomontage

**Viewpoint Information** OS Reference: E331472 N656568 Distance to nearest turbine: 2631m (T7)  
Ground level: 251m (AOD) Bearing to centre of photograph: 133.8°

Angle of view: 90° (cylindrical)  
Principal distance: 812.5mm  
Paper size: 841 x 297 mm (half A1)  
Correct printed image size: 820 x 230mm

Camera: Canon EOS 5D Mark III  
Lens: 50mm Fixed Focal Lens  
Height: 1.5m  
Date & Time: 06/01/2023 13:24



(Sheet G)  
LVIA Viewpoint 12 - Minor road near Yorkston Farm  
Figure 6.48 Drawing number P22-2236\_111