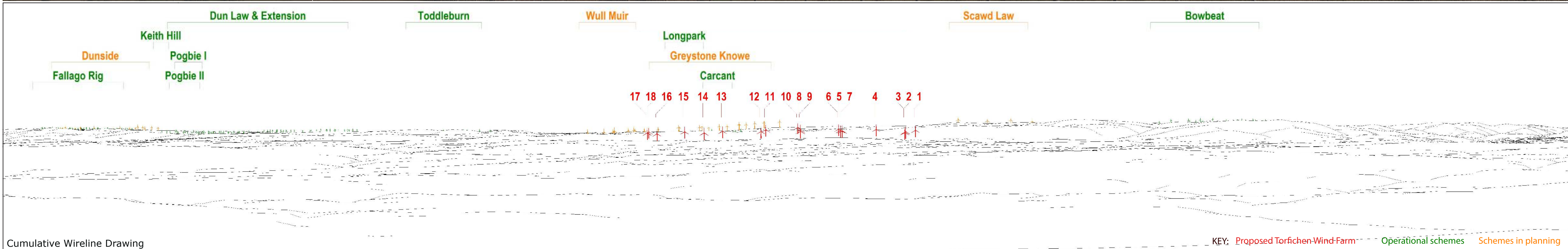


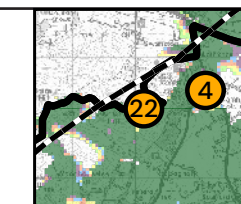
Existing View



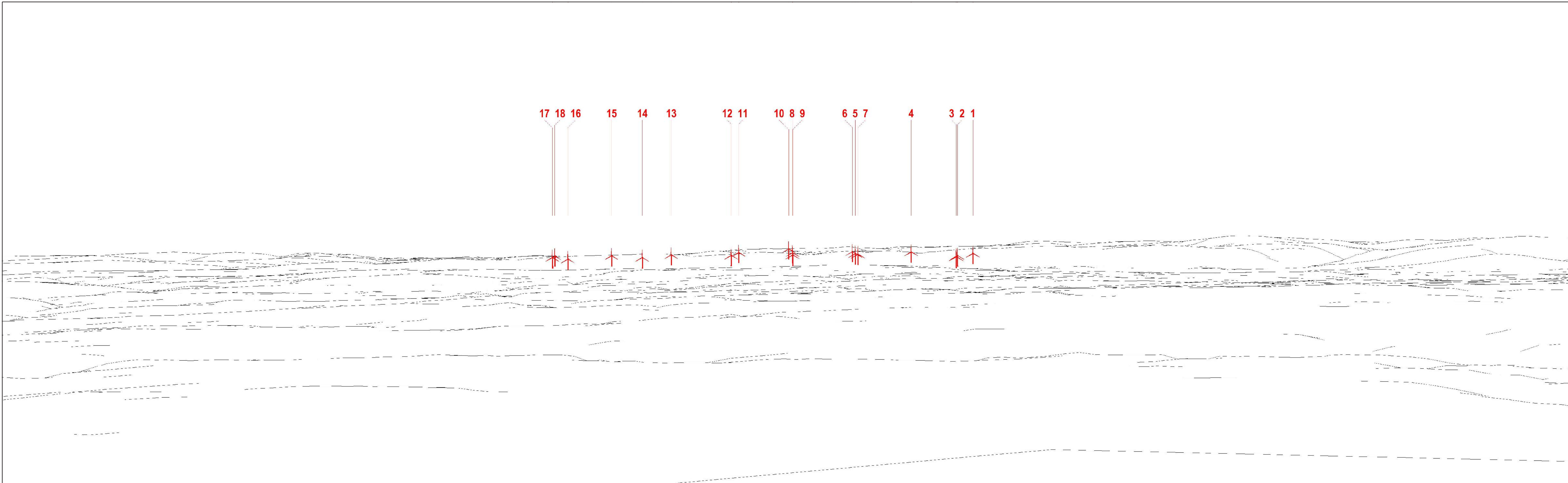
Cumulative Wireline Drawing

KEY: Proposed Torfichen Wind Farm Operational schemes Schemes in planning

Viewpoint Information OS Reference: E324155 N666131 Distance to nearest turbine: 14549m (T3) Angle of view: 90° (cylindrical) Camera: Nikon Z 6_2
 Ground level: 449m (AOD) Bearing to centre of photograph: 141.25° Principal distance: 812.5mm Lens: 50mm Fixed Focal Lens
 TORFICHEN WIND FARM Paper size: 841 x 297 mm (half A1) Height: 1.5m Date & Time: 04/09/2023 17:26
 Correct printed image size: 820 x 260mm



(Sheet A)
 LVIA Viewpoint 22 - Caerketton Hill
 Figure 6.58 Drawing number P22-2236_121



Wireline Drawing

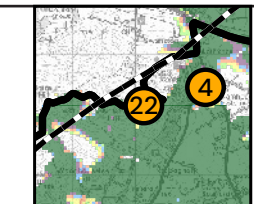
KEY: Proposed Torfichen Wind Farm

Viewpoint Information OS Reference: E324155 N666131
 Ground level: 449m (AOD)

Distance to nearest turbine: 14549m (T3)
 Bearing to centre of photograph: 141.25°

Angle of view: 53.5° (planar)
 Principal distance: 812.5mm
 Paper size: 841 x 297 mm (half A1)
 Correct printed image size: 820 x 260mm

Camera: Nikon Z 6_2
 Lens: 50mm Fixed Focal Lens
 Height: 1.5m
 Date & Time: 04/09/2023 17:26



TORFICHEN WIND FARM



(Sheet B)
 LVIA Viewpoint 22 - Caerketton Hill
 Figure 6.58 Drawing number P22-2236_121

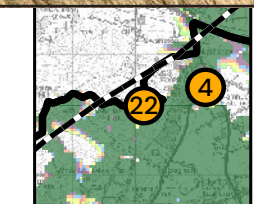


Viewpoint Information OS Reference: E324155 N666131
 Ground level: 449m (AOD)

Distance to nearest turbine: 14549m (T3)
 Bearing to centre of photograph: 141.25°

Angle of view: 53.5° (planar)
 Principal distance: 812.5mm
 Paper size: 841 x 297 mm (half A1)
 Correct printed image size: 820 x 260mm

Camera: Nikon Z 6_2
 Lens: 50mm Fixed Focal Lens
 Height: 1.5m
 Date & Time: 04/09/2023 17:26



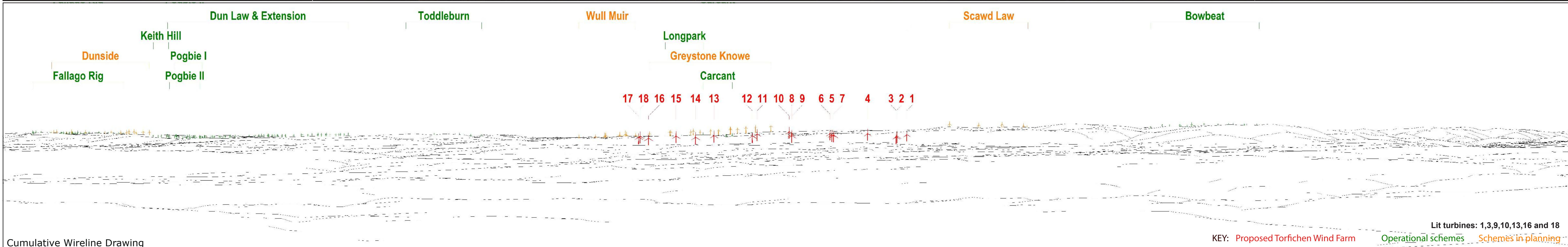
TORFICHEN WIND FARM



(Sheet C)
 LVIA Viewpoint 22 - Caerketton Hill
 Figure 6.58 Drawing number P22-2236_121

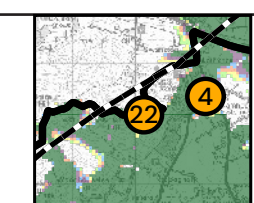


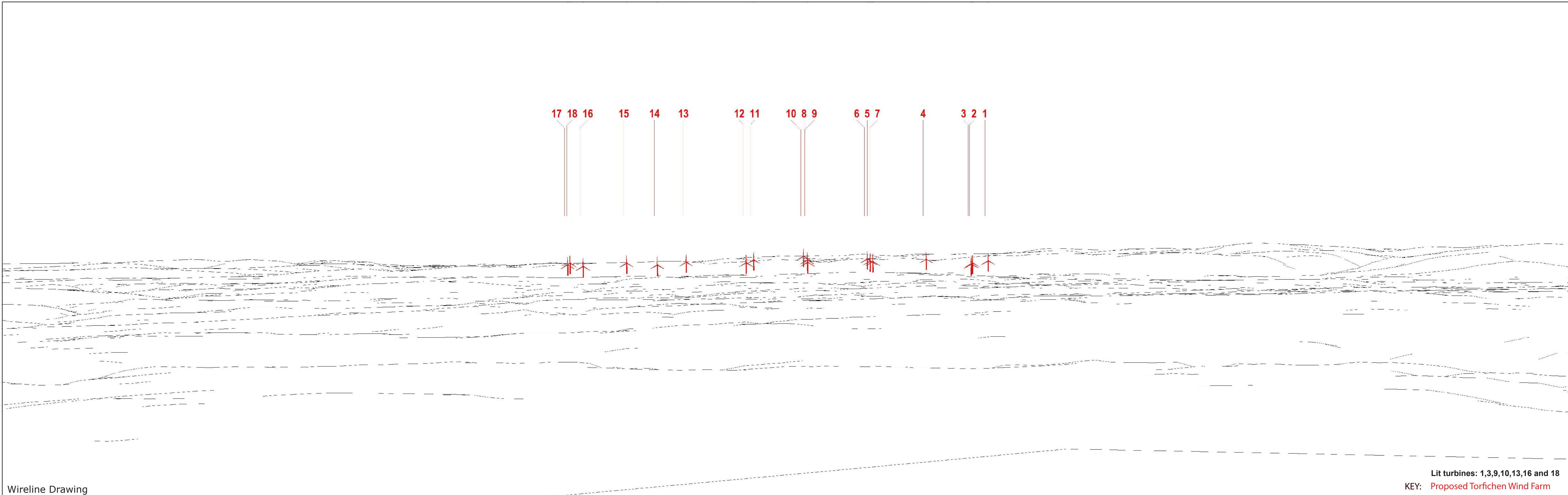
Extent of 53.5 degrees planar panorama



Cumulative Wireline Drawing

Viewpoint Information OS Reference: E324155 N666131 Distance to nearest turbine: 14549m (T3) Angle of view: 90° (cylindrical) Camera: Nikon Z 6_2
 Ground level: 449m (AOD) Bearing to centre of photograph: 140.75° Principal distance: 812.5mm Lens: 50mm Fixed Focal Lens
 Paper size: 841 x 297 mm (half A1) Height: 1.5m
 Correct printed image size: 820 x 260mm Date & Time: 04/09/2023 17:26

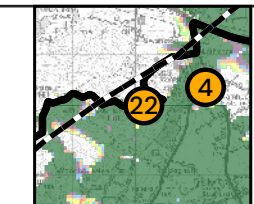




Wireline Drawing

Lit turbines: 1,3,9,10,13,16 and 18
 KEY: Proposed Torfichen Wind Farm

Viewpoint Information OS Reference: E324155 N666131 Distance to nearest turbine: 14549m (T3) Angle of view: 53.5° (planar) Camera: Nikon Z 6_2
 Ground level: 449m (AOD) Bearing to centre of photograph: 140.7° Principal distance: 812.5mm Lens: 50mm Fixed Focal Lens
 TORFICHEN WIND FARM Paper size: 841 x 297 mm (half A1) Height: 1.5m
 Correct printed image size: 820 x 260mm Date & Time: 04/09/2023 17:26





Photomontage

Viewpoint Information OS Reference: E324154 N666130 Distance to nearest turbine: 14549m (T3) Angle of view: 53.5° (planar) Camera: Nikon Z 6_2
 Ground level: 449m (AOD) Bearing to centre of photograph: 140.7° Principal distance: 812.5mm Lens: 50mm Fixed Focal Lens
 Paper size: 841 x 297 mm (half A1) Height: 1.5m
 Correct printed image size: 820 x 260mm Date & Time: 04/09/2023 17:26

TORFICHEN WIND FARM

