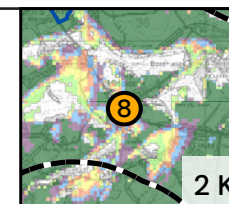


Cumulative Wireline Drawing

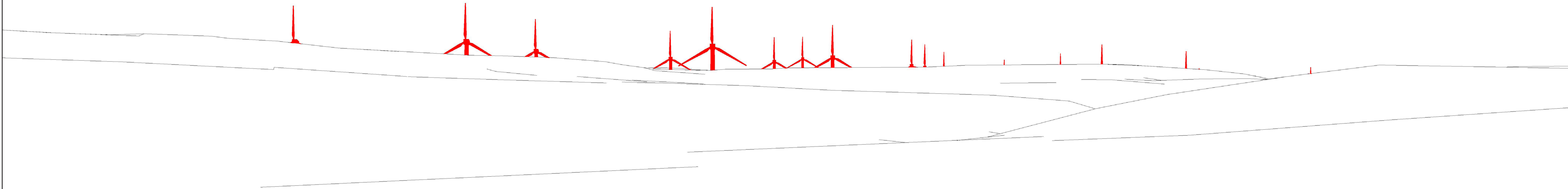
KEY: Proposed Torfichen Wind Farm Schemes in planning

Viewpoint Information OS Reference: E335698 N658882 Distance to nearest turbine: 2996m (T16) Angle of view: 90° (cylindrical)
 Ground level: 203m (AOD) Bearing to centre of photograph: 198°

Principal distance: 812.5mm Camera: Canon EOS 5D Mark III
 Paper size: 841 x 297 mm (half A1) Lens: 50mm Fixed Focal Lens
 Correct printed image size: 820 x 260mm Height: 1.5m
 Date & Time: 02/01/2023 11:55



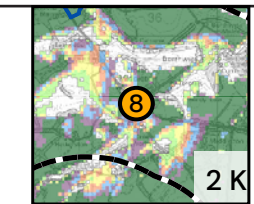
18 17 15 13 16 11 10 14 12 8 6 4 5 9 7 2 3



Wireline Drawing

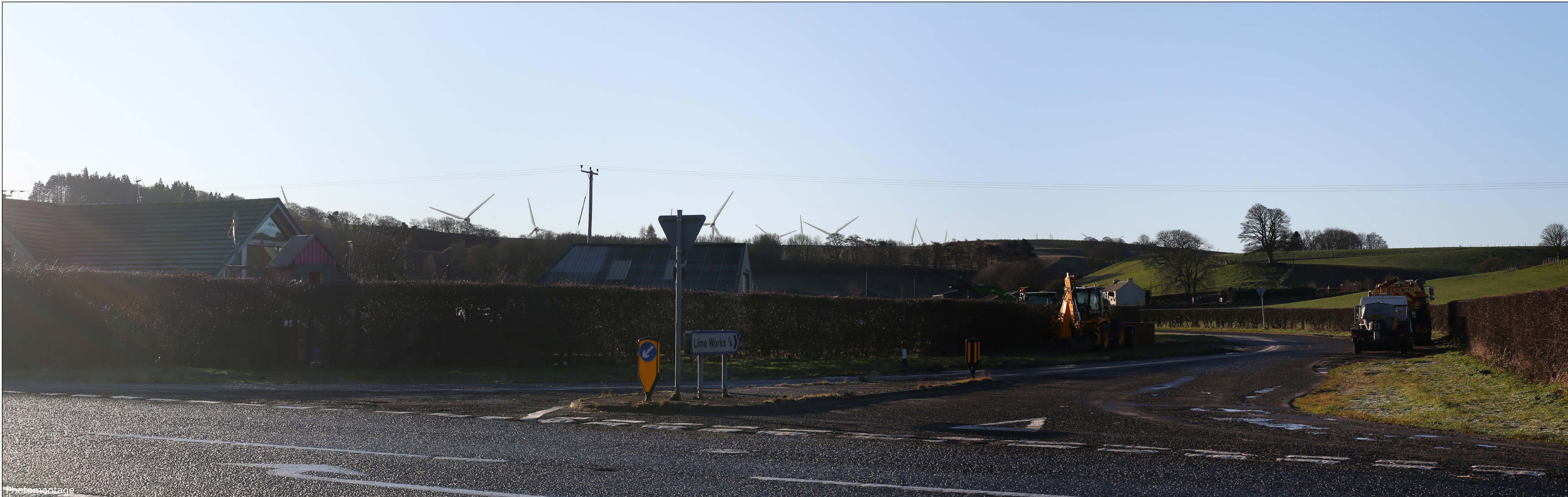
KEY: Proposed Torfichen Wind Farm

Viewpoint Information OS Reference: E335698 N658882 Distance to nearest turbine: 2996m (T16) Angle of view: 53.5° (planar) Camera: Canon EOS 5D Mark III
 Ground level: 203m (AOD) Bearing to centre of photograph: 198° Principal distance: 812.5mm Lens: 50mm Fixed Focal Lens
 Paper size: 841 x 297 mm (half A1) Height: 1.5m
 Correct printed image size: 820 x 260mm Date & Time: 02/01/2023 11:55



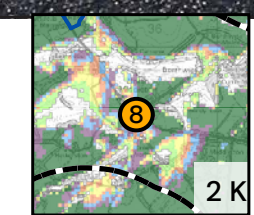
(Sheet B)
 LVIA Viewpoint 8 - A7, North Middleton
 Figure 6.44 Drawing number P22-2236_107

TORFICHEN WIND FARM



Photomontage

Viewpoint Information OS Reference: E338584 N657695 Distance to nearest turbine: 3679m (T18) Angle of view: 53.5° (planar) Camera: Canon EOS 5D Mark III
 Ground level: 264m (AOD) Bearing to centre of photograph: 237.3° Principal distance: 812.5mm Lens: 50mm Fixed Focal Lens
 Paper size: 841 x 297 mm (half A1) Height: 1.5m Date & Time: 02/01/2023 12:10
 Correct printed image size: 820 x 260mm



TORFICHEN WIND FARM



(Sheet C)
 LVIA Viewpoint 8 - A7, North Middleton
 Figure 6.44 Drawing number P22-2236_107