

Cumulative Wireline Drawing

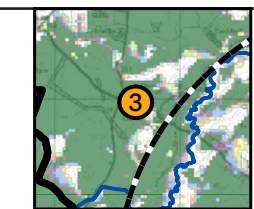
KEY: Proposed Torfichen Wind Farm Operational schemes Schemes in planning

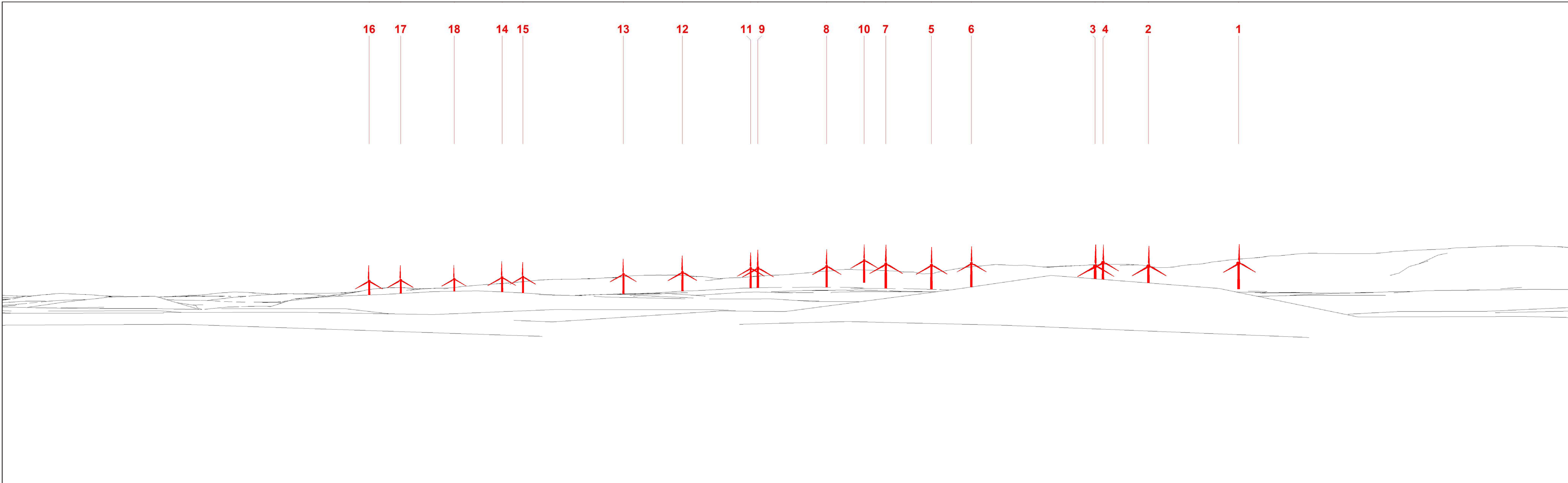
**Viewpoint Information** OS Reference: E327273 N656958  
Ground level: 260m (AOD)

Distance to nearest turbine: 5626m (T3)  
Bearing to centre of photograph: 112.15°

Angle of view: 90° (cylindrical)  
Principal distance: 812.5mm  
Paper size: 841 x 297 mm (half A1)  
Correct printed image size: 820 x 260mm

Camera: Canon EOS 5D Mark III  
Lens: 50mm Fixed Focal Lens  
Height: 1.5m  
Date & Time: 02/01/2023 14:45





Wireline Drawing

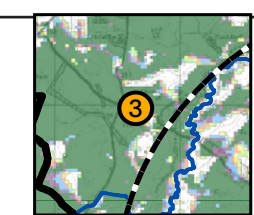
KEY: Proposed Torfichen Wind Farm

**Viewpoint Information** OS Reference: E327273 N656958  
 Ground level: 260m (AOD)

Distance to nearest turbine: 5626m (T3)  
 Bearing to centre of photograph: 112.15°

Angle of view: 53.5° (planar)  
 Principal distance: 812.5mm  
 Paper size: 841 x 297 mm (half A1)  
 Correct printed image size: 820 x 260mm

Camera: Canon EOS 5D Mark III  
 Lens: 50mm Fixed Focal Lens  
 Height: 1.5m  
 Date & Time: 02/01/2023 14:45



TORFICHEN WIND FARM



(Sheet B)  
 LVIA Viewpoint 3 - B6372 : Mount Lothian area  
 Figure 6.39 Drawing number P22-2236\_102



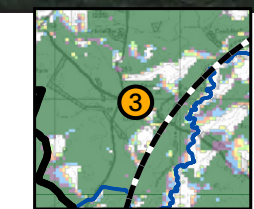
Photomontage

**Viewpoint Information** OS Reference: E327273 N656958  
Ground level: 260m (AOD)

Distance to nearest turbine: 5626m (T3)  
Bearing to centre of photograph: 112.15°

Angle of view: 53.5° (planar)  
Principal distance: 812.5mm  
Paper size: 841 x 297 mm (half A1)  
Correct printed image size: 820 x 260mm

Camera: Canon EOS 5D Mark III  
Lens: 50mm Fixed Focal Lens  
Height: 1.5m  
Date & Time: 02/01/2023 14:45



TORFICHEN WIND FARM



(Sheet C)  
LVIA Viewpoint 3 - B6372 : Mount Lothian area  
Figure 6.39 Drawing number P22-2236\_102