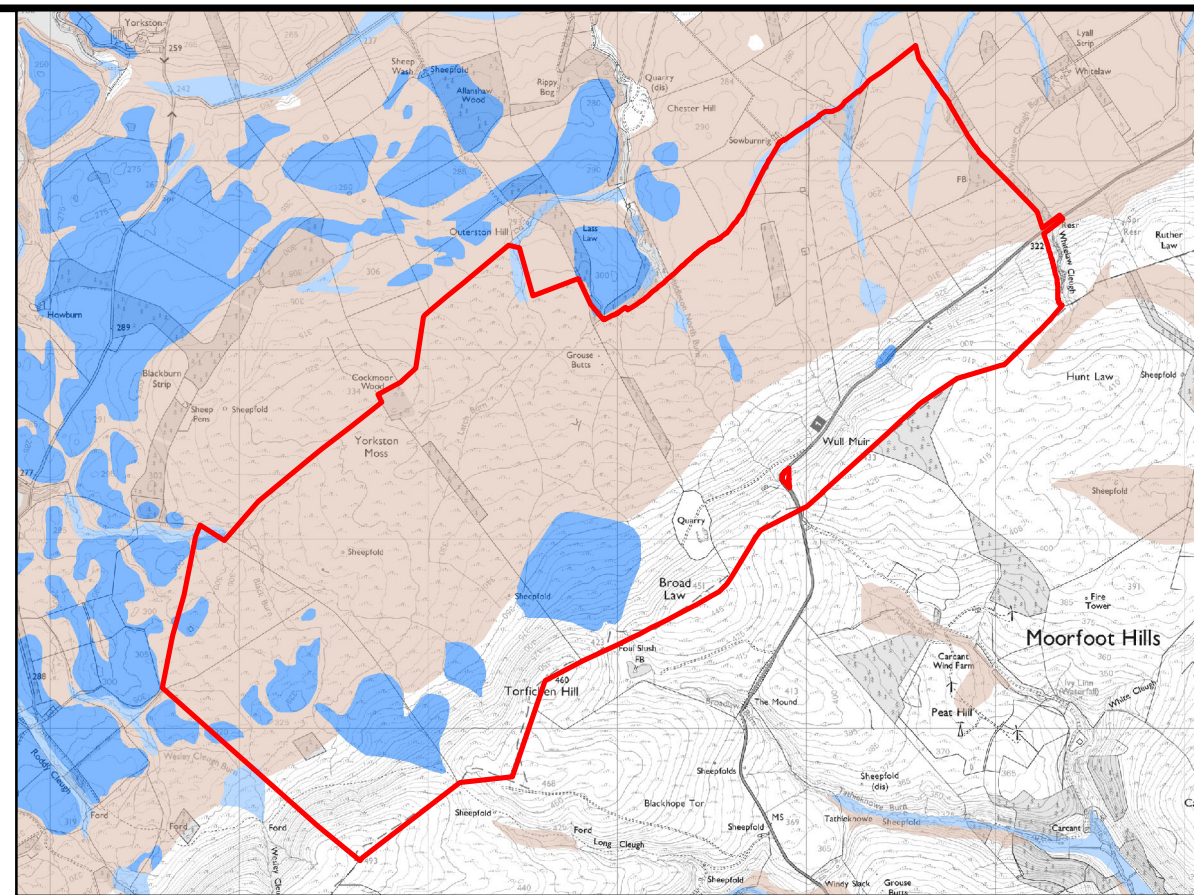


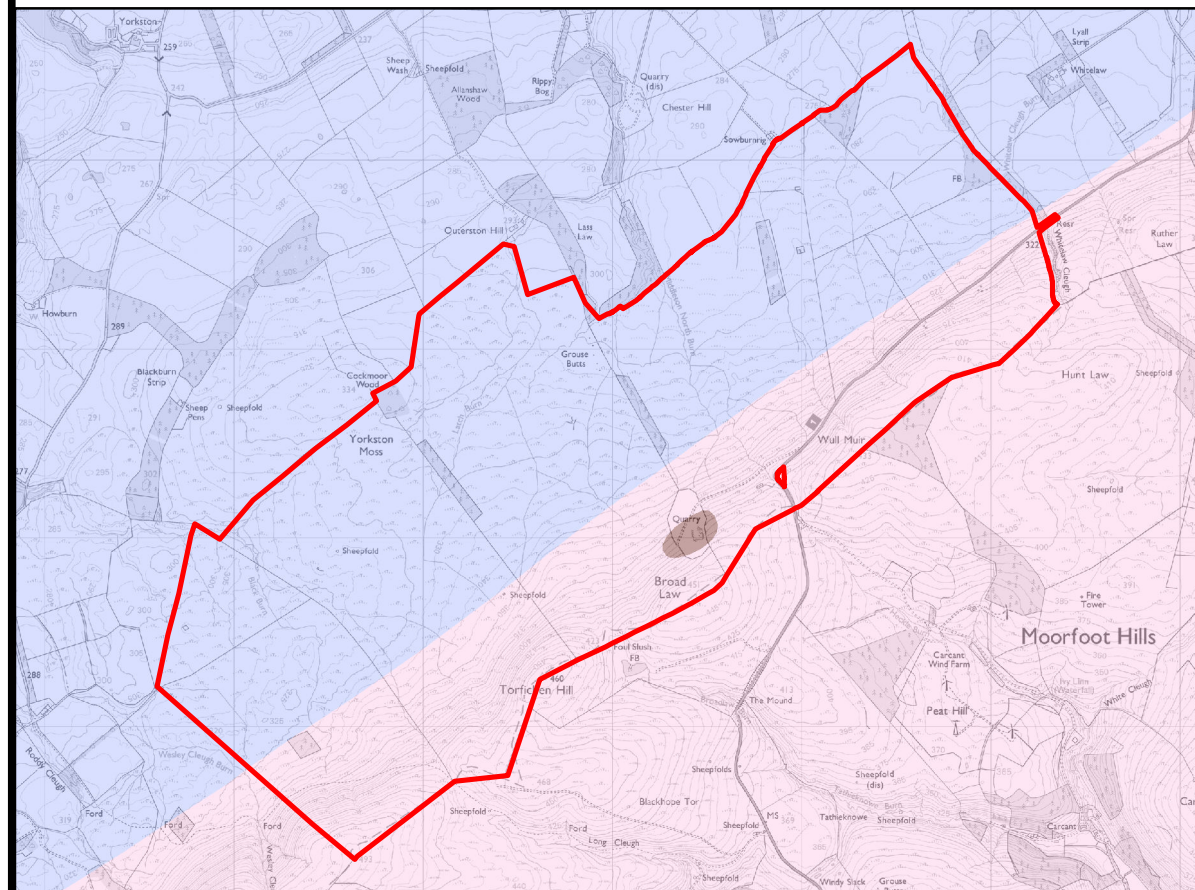
MAP EXTRACT

Scale - 1:200,000 @ A3



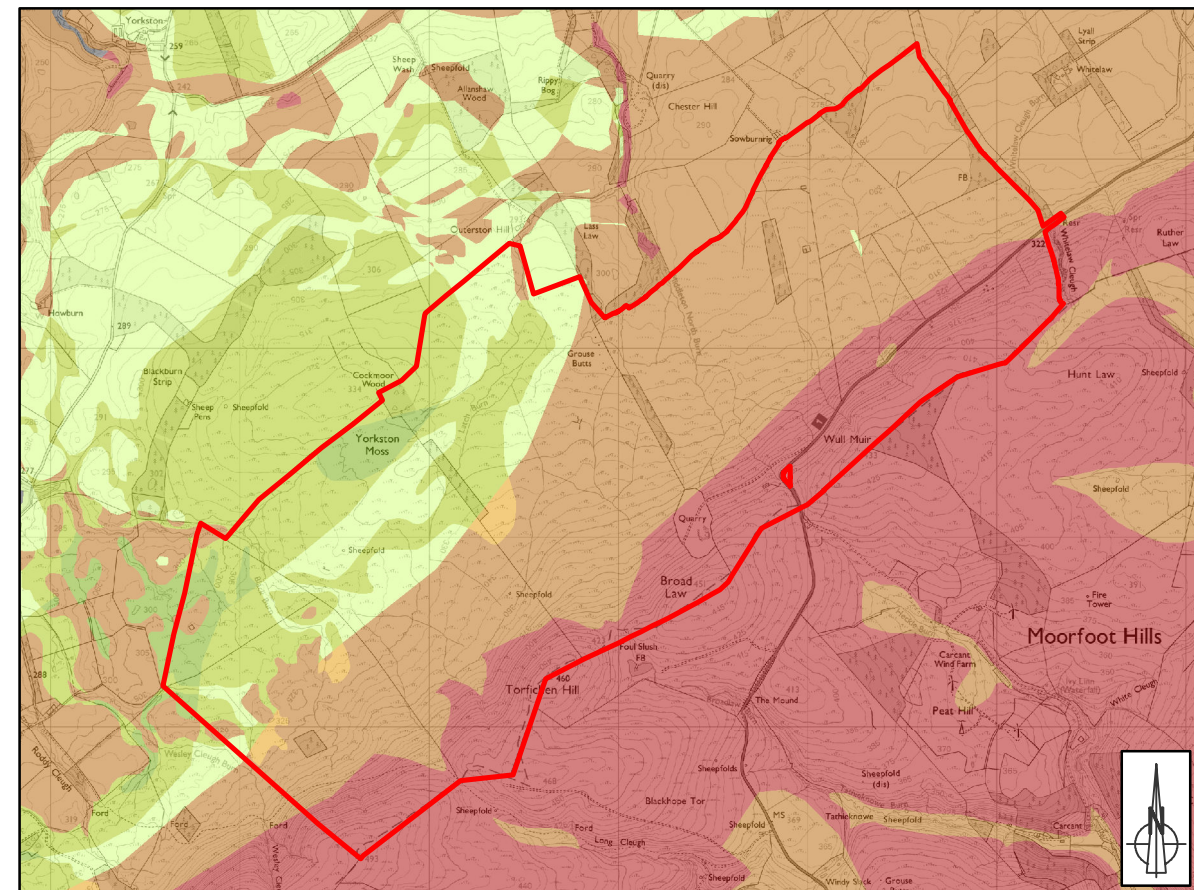
SUPERFICIAL AQUIFERS

Scale - 1:40,000 @ A3



BEDROCK AQUIFERS

Scale - 1:40,000 @ A3



GROUNDWATER VULNERABILITY IN THE UPPERMOST AQUIFER

Scale - 1:40,000 @ A3



TORFICHEN WIND FARM
EIA REPORT

FIG 10.7

GROUNDWATER
VULNERABILITY

© CROWN COPYRIGHT, ALL RIGHTS RESERVED.
2023 LICENCE NUMBER 0100031673.
Contains British Geological Survey materials
Copyright© NERC [2023]

KEY

- SITE BOUNDARY
- SUPERFICIAL AQUIFERS**
- INTERGRANULAR; HIGH PRODUCTIVITY
- INTERGRANULAR; MODERATE TO HIGH PRODUCTIVITY
- NOT A SIGNIFICANT AQUIFER
- BEDROCK AQUIFERS**
- INTERGRANULAR/FRACTURE; MODERATE PRODUCTIVITY
- FRACTURE; LOW PRODUCTIVITY
- FRACTURE; VERY LOW PRODUCTIVITY
- GROUNDWATER VULNERABILITY IN THE UPPERMOST AQUIFER VULNERABILITY CLASS**
- 5 - VULNERABLE TO MOST POLLUTANTS, WITH RAPID IMPACT IN MANY SCENARIOS).
- 4A - VULNERABLE TO THOSE POLLUTANTS NOT READILY ADSORBED OR TRANSFORMED. LESS LIKELY TO HAVE CLAY PRESENT IN SUPERFICIAL DEPOSITS (THEREFORE GENERALLY HIGHER VULNERABILITY THAN 4B).
- 4B - VULNERABLE TO THOSE POLLUTANTS NOT READILY ADSORBED OR TRANSFORMED. MORE LIKELY TO HAVE CLAY PRESENT IN SUPERFICIAL DEPOSITS (THEREFORE GENERALLY LOWER VULNERABILITY THAN 4A).
- 3 - VULNERABLE TO SOME POLLUTANTS; MANY OTHERS SIGNIFICANTLY ATTENUATED.
- 2 - VULNERABLE TO SOME POLLUTANTS, BUT ONLY WHEN THEY ARE CONTINUOUSLY DISCHARGED/LEACHED.
- 1 - ONLY VULNERABLE TO CONSERVATIVE POLLUTANTS IN THE LONG TERM WHEN CONTINUOUSLY AND WIDELY DISCHARGED/LEACHED.
- 0 - NOT SUFFICIENT DATA TO CLASSIFY VULNERABILITY; E.G. BELOW LOCHS; IN URBAN AREAS WHERE GEOLOGICAL AND/OR SOILS DATA ARE MISSING; OR WHERE SUPERFICIAL DEPOSITS ARE MAPPED BUT NOT CLASSIFIED.

SCALE - AS SHOWN ON PLAN



ENVIRONMENTAL IMPACT ASSESSMENT
REPORT 2023

THIS DRAWING IS THE PROPERTY OF RENEWABLE ENERGY SYSTEMS LTD. AND NO REPRODUCTION MAY BE MADE IN WHOLE OR IN PART WITHOUT PERMISSION