

TORFICHEN WIND FARM PROPOSAL

NEWSLETTER – FEBRUARY 2023



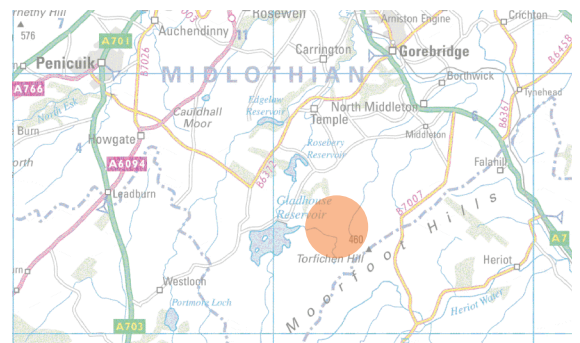
About the Project

Overview and site location

RES is in the early stages of exploring a potential wind farm and energy storage proposal near Torfichen Hill, approximately 6km south of Gorebridge in Midlothian.

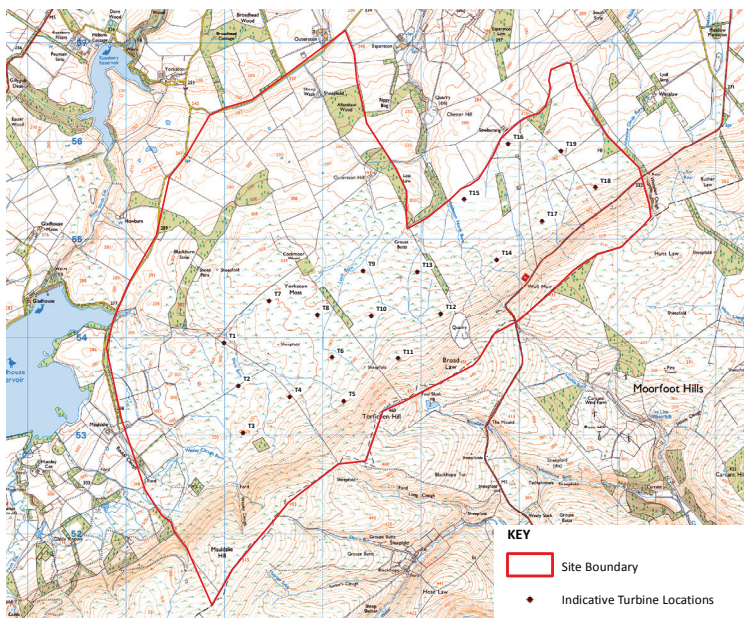
Following initial feasibility work on site we submitted a Scoping Report in January 2023 to the Scottish Government, seeking feedback on the scope of proposed environmental survey work.

The Scoping Report included an early design layout for the proposed scheme comprising 19 turbines at a tip height of around 180m, resulting in an overall installed site generating capacity (based on the scoping layout) of around 114MW, and a proposed energy storage facility which will help maximise generation capacity and efficiency of the site.



Approximate location of wind farm site (for illustrative purposes only)

Indicative turbine layout



Copyright and database right 2020; Historic Environment Scotland and Ordnance Survey data ©

Turbine technology has continued to advance considerably and new onshore wind projects like the proposed Torfichen Wind Farm are amongst the lowest cost forms of generating electricity.

These modern, taller turbines generate significantly more electricity which will help to address the climate emergency, cost of living crisis and security of energy supply issues that we currently face.

If consented, Torfichen Wind Farm would be capable of generating clean, low-cost renewable electricity for around 85,000' homes - helping to play an important role in meeting Scotland's legally-binding 2045 net zero target.

Public Exhibitions

Engaging early with the community

We are holding public exhibitions in the local area to enable people to learn more about the project, discuss any questions with the RES project team, and provide feedback on the initial design.

The exhibitions initiate a consultation period being run by RES to gather written comments on the proposal. Anyone wishing to provide feedback to RES on the project can do so in writing by filling out a 'comments form' at the exhibition events or online at www.torfichen-windfarm.co.uk from Monday 6 March 2023 when copies of the exhibition information will be available on the project website for people to view.

The closing date for comments is Tuesday 4 April 2023. Please note that comments to RES at this time are not representations to the determining authority (The Scottish Government's Energy Consents Unit). There will be an opportunity to submit representations to the determining authority should an application be submitted.

The project is also predicted to deliver approximately £5.3 million² of inward investment to the area as well as a tailored community benefits package in line with local needs and priorities. As such, in addition to gathering people's feedback on the design and layout of the proposal itself we're keen to understand the local priorities, needs and community projects which people would like to see the wind farm support, should it go ahead.

We're also looking to build our knowledge of local skills and capabilities and explore ways of maximising inward investment to the local area from the project, so if you're a local business interested in getting involved in onshore wind projects please come along to the exhibitions and talk to our team.

About RES

RES, a British company with a proud history in Scotland, is the world's largest independent renewable energy company with operations across Europe, the Americas and Asia-Pacific. At the forefront of the industry for over 40 years, RES has delivered more than 23GW of renewable energy projects worldwide.

Employing over 100 staff in Scotland, RES has the expertise to develop, construct and operate projects of outstanding quality such as Penmanshiel Wind Farm in the Scottish Borders, and works closely with the local supply chain wherever possible.

Contact us



Danny McLean

Development Project Manager

✉ danny.mclean@res-group.com

☎ 07769 388725

📍 RES, Third Floor
STV, Pacific Quay, Glasgow, G51 1PQ

Exhibition dates
Monday 6 March 2023 1pm to 6pm Middleton Village Community Hall 54 Borthwick Castle Terrace, North Middleton EH23 4QU
Tuesday 7 March 2023 3pm to 8pm Macfie Hall Heriot EH38 5YE

Visit our website at www.torfichen-windfarm.co.uk

This newsletter has been designed to keep you up to date with the Torfichen Wind Farm proposal. If you no longer wish to receive this newsletter, please write to RES at the address above to let us know.

If you require information in Braille, large text or audio, please get in touch with us.

¹ The 85,000 homes equivalent figure has been calculated by taking the predicted annual electricity generation of the site (using the Department of Business, Energy and Industrial Strategy's [BEIS] average load factor for [onshore and offshore] wind of 31.84% and RES' predicted site generation capacity of 114MW) and dividing this by the BEIS annual average electricity figure showing that the annual UK average domestic household consumption is 3,748 kWh (December 2021). Final wind farm capacity will vary depending on the outcome of planning permission and the turbine type selected.

² The £5.3 million inward investment figure is based on typical spend that RES has seen spent on its projects with local stakeholders, suppliers and service providers in the region of £279,000 per wind turbine during the development, construction and first year of operation.